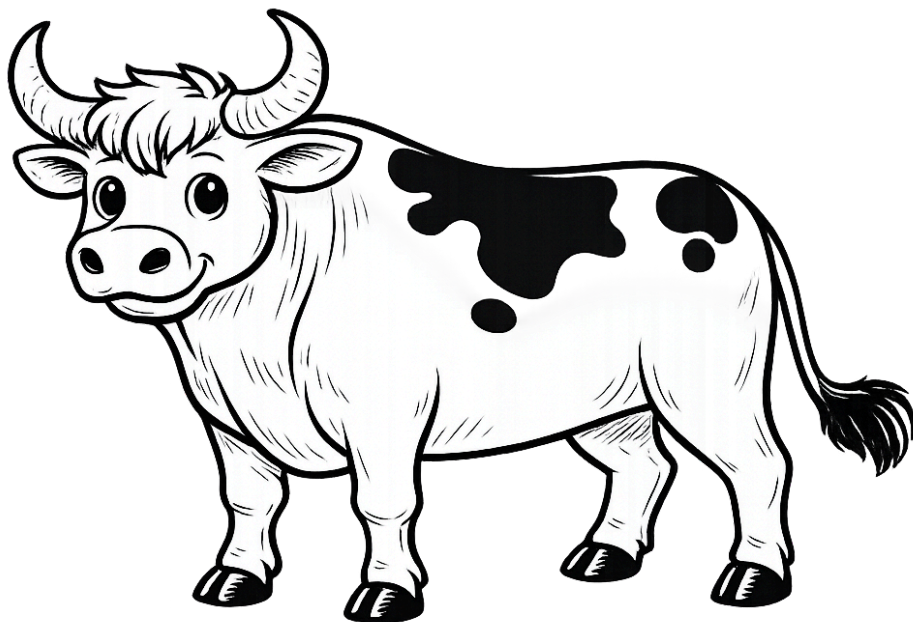


Name _____

Date _____

X is at the end of Ox

Directions: Color the Ox and the letter X x. Say the "X" sound like in "ox."

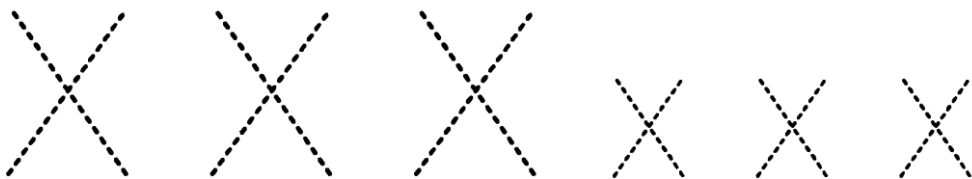


Trace the word:



Say it out loud: X is at the end of ox.

Trace the letters:



© ARS Family Ink Homeschool Haven

For personal use only. Not for resale or redistribution.
www.arsfamilyink.com