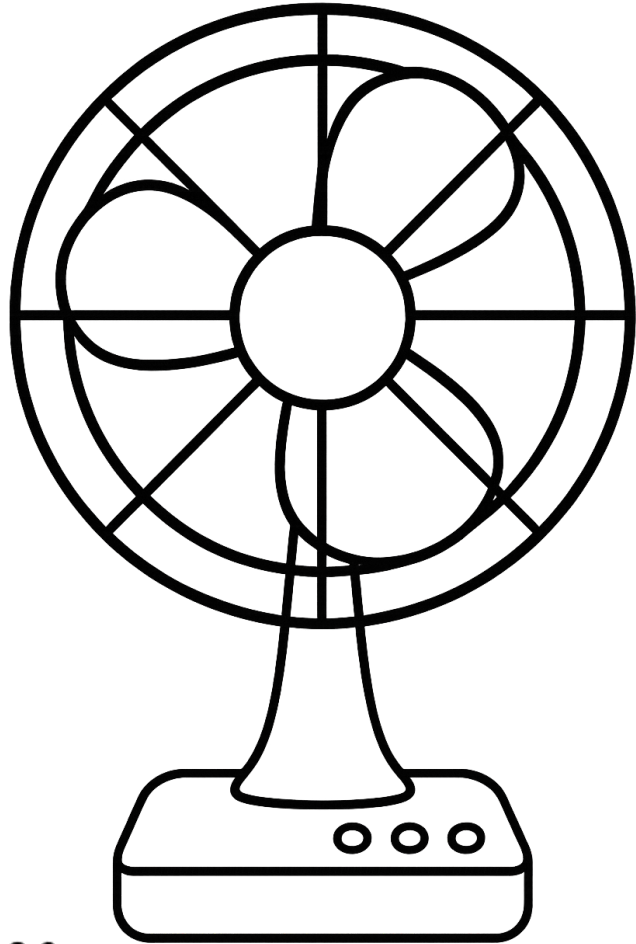
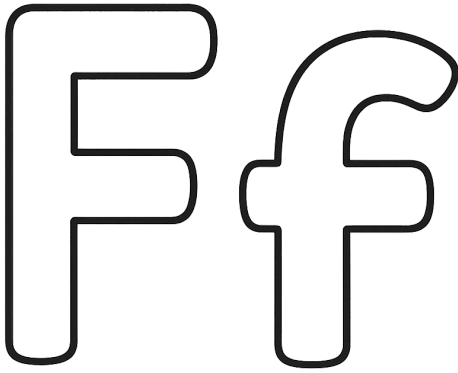


Name \_\_\_\_\_

Date \_\_\_\_\_

# F is for Fan

Directions: Color the fan and the letter F f. Say the sound /f/ like in "fan".

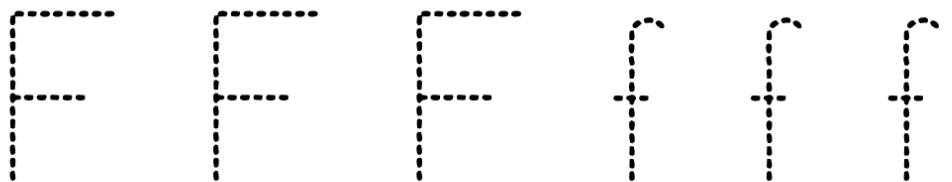


Trace the word:



Say it out loud: F is for fan

Trace the letters:



© ARS Family Ink Homeschool Haven

For personal use only. Not for resale or redistribution.  
[www.arsfamilyink.com](http://www.arsfamilyink.com)